

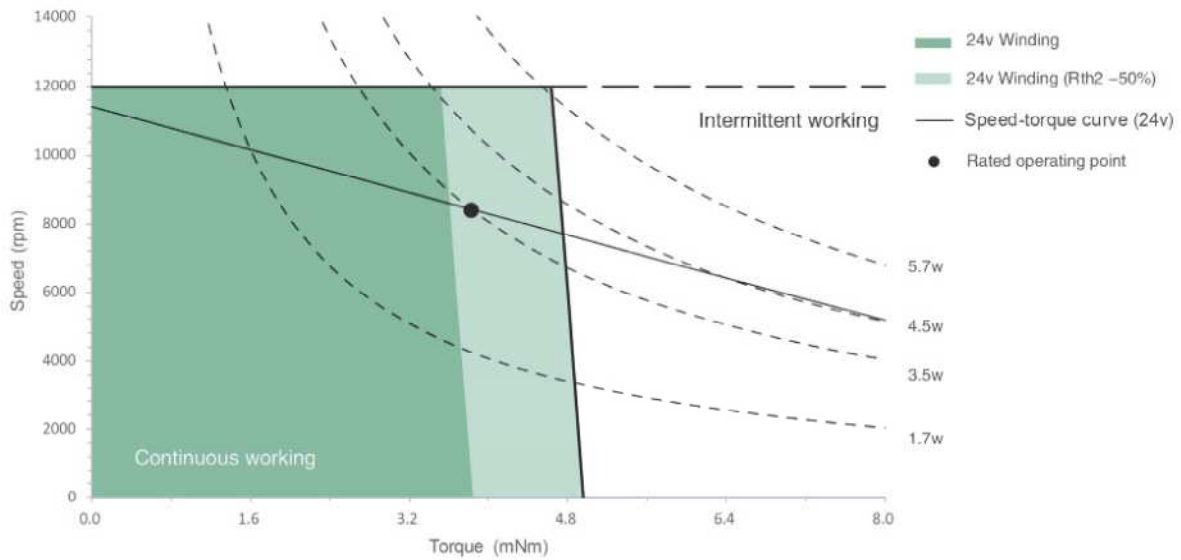
# TCU17025 $\varnothing$ 17mm Precious Metal Brushes 3.5/4.5W

Motor Data		Part Numbers			
		TCU17025P06	TCU17025P12	TCU17025P18	TCU17025P24
Nominal voltage	V	6	12	18	24
No load speed	rpm	10400	10400	10700	11400
No load current	mA	12.3	8.2	6.3	3.5
Nominal speed	rpm	7310	7520	7800	8260
Max. continuous torque	mNm	3.69	3.90	3.88	3.89
Max. continuous current	A	0.686	0.365	0.250	0.195
Stall torque	mNm	12.47	14.16	14.47	14.91
Stall current	A	2.27	1.29	0.91	0.73
Max efficiency	%	86	83	84	87
Terminal Resistance	Ohm	2.6	9.3	19.8	32.7
Terminal Inductance	mH	0.068	0.272	0.600	0.900
Torque constant	mNm / A	5.49	10.98	15.92	20.32
Speed constant	rpm / V	1740	870	600	470
Speed/torque gradient	rpm / mNm	837	737	746	756
Mechanical time constant	ms	5.96	5.80	5.79	5.91
Rotor inertia	gcm <sup>2</sup>	0.680	0.752	0.741	0.746

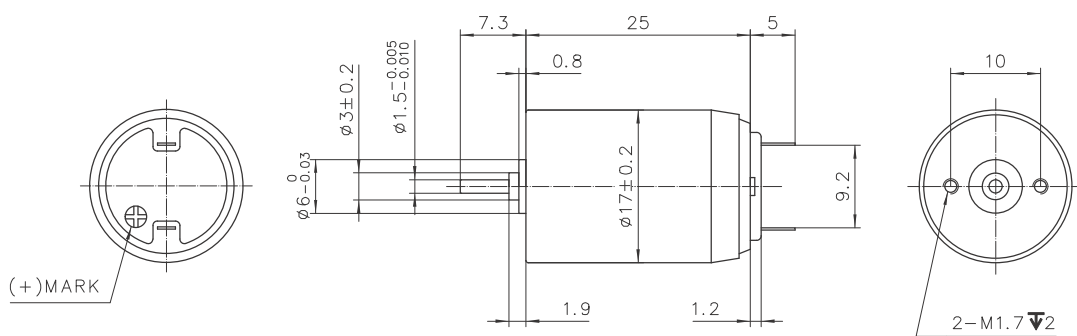
Specification		
Bearing	Sleeve bearing	
Max speed	rpm	12000
Axial play	mm	≤0.3
Number of commutator segments	5	
Ambient temperature	° C	-20~+65
Max winding temperature	° C	100
Thermal resistance		
Housing - Ambient	° C / W	35.0
Winding - Housing	° C / W	13.2
Thermal time constant		
Motor	s	360
Winding	s	6.20
Number of pole pairs	1	
Weight	g	30

Combination	
<b>Gearbox</b>	
PG16C	
Ø16mm	0.5 Nm 19:1-850:1
Page 44	
<b>Encoder</b>	
R16	
Ø16mm	512 Lines 3 Channels
Page 49	
K16	
Ø16mm	200 Lines 2 Channels
Page 50	
<b>Option</b>	
Precious Metal Brushes / Graphite Brushes	
Sleeve Bearing / Ball Bearing	

## Operating Range



## Dimension



TCU17025Pxx-S001