

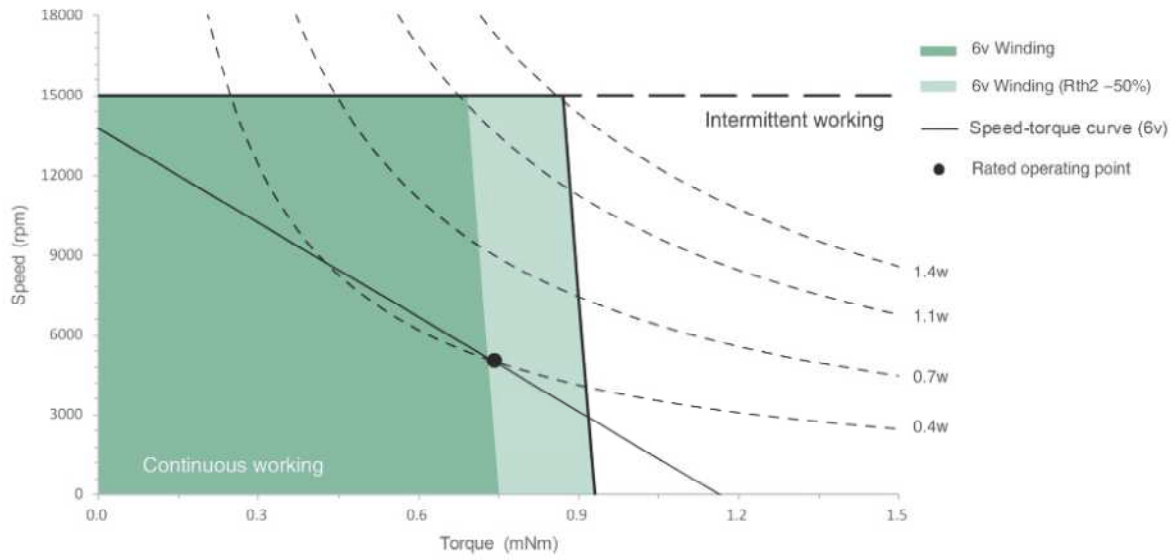
# TCU10017 $\varnothing$ 10mm Precious Metal Brushes 0.4/1.1W

Motor Data		Part Numbers	
		TCU10017P03	TCU10017P06
Nominal voltage	V	3	6
No load speed	rpm	13300	13800
No load current	mA	18.6	11.2
Nominal speed	rpm	4990	5010
Max. continuous torque	mNm	0.80	0.71
Max. continuous current	A	0.403	0.197
Stall torque	mNm	1.33	1.21
Stall current	A	0.63	0.30
Max efficiency	%	69	65
Terminal Resistance	Ohm	4.7	19.8
Terminal Inductance	mH	0.042	0.197
Torque constant	mNm / A	2.09	4.00
Speed constant	rpm / V	4570	2390
Speed/torque gradient	rpm / mNm	10345	11844
Mechanical time constant	ms	7.37	7.57
Rotor inertia	gcm <sup>2</sup>	0.068	0.061

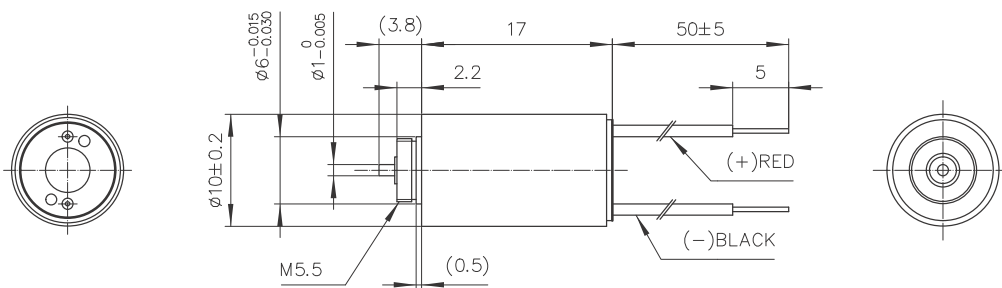
Specification		
Bearing		Sleeve bearing
Max speed	rpm	15000
Axial play	mm	≤0.3
Number of commutator segments		5
Ambient temperature	° C	-20~+65
Max winding temperature	° C	100
Thermal resistance		
Housing - Ambient	° C/ W	54.5
Winding - Housing	° C/ W	23.4
Thermal time constant		
Motor	s	108
Winding	s	2.53
Number of pole pairs		1
Weight	g	7.4

Combination	
<b>Gearbox</b>	
PG10C	
Ø10mm 0.15 Nm 16:1-1024:1	
Page 42	
<b>Encoder</b>	
RS10	
Ø10mm 12 Lines 2 Channels	
Page 47	

## Operating Range



## Dimension



TCU10017Pxx-S001