

1. Introduction

This document presents the application notes structure and some using tips.

2. Application notes structure

Most of the application notes includes a PDF file and a demo project.

The PDF file contains a short description of the respective application note, the application flow chart, a code overview and a detailed description of the TML application implementation.

The demo project (an “*.m.zip” file) contains the TML program described in the PDF file.

3. Application note using

The PDF file represents the application note base. Using the information inside the user will manage to implement the presented functionality.

For the user convenience, most of the application notes includes a demo project too. This was developed in EasyMotion Studio and is provided as a project archive (“*.m.zip” file).

To restore a project archive content, the following steps are required:

- 1) Save the “*.m.zip” file to the PC;
- 2) Open the EasyMotion Studio software;
- 3) Select the “Restore” option in the “Project” pop-up menu.
- 4) Browse for the needed “*.m.zip” file and select it.

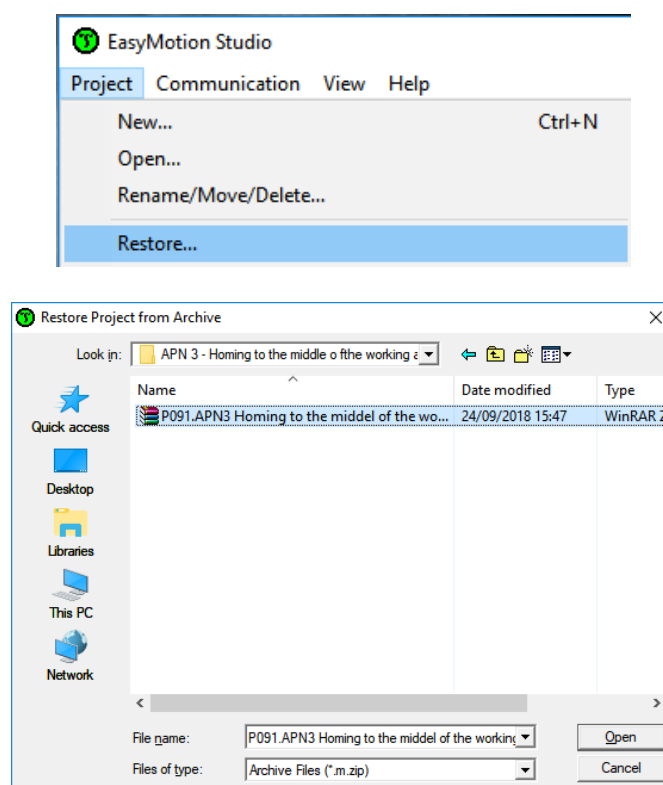


Figure 1. Project archive restoring in EasyMotion Studio

After restoring procedure ends, EasyMotion Studio will display a project for iPOS4808 MY-CAN. The TML application program inside is compatible with most of the iPOS drives or iMOT intelligent motor.

Remark: If the TML application will be implemented on other drive than iPOS4808 MY-CAN, the user needs to check if the used inputs / outputs (if any) have the same number and polarity.

The TML application in a demo project can be imported to any project using the “Load from Another Application” option in the “Application” pop-up menu.

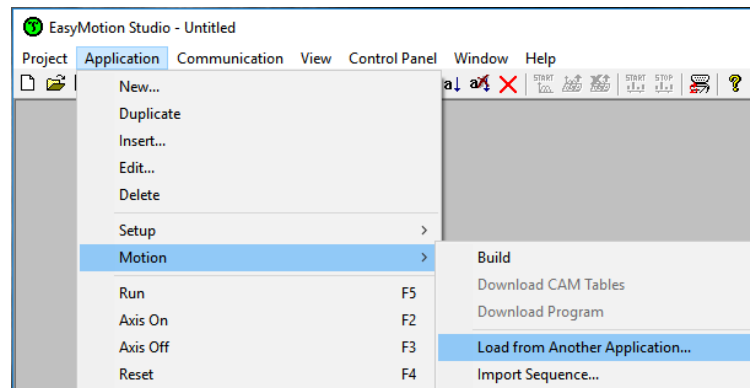


Figure 2. How to load an application from another project

If only a part of the code is needed, it can be selected and exported as a “*.msq” file (from the original project), using the “Export” option in the right side menu in EasyMotion Studio.

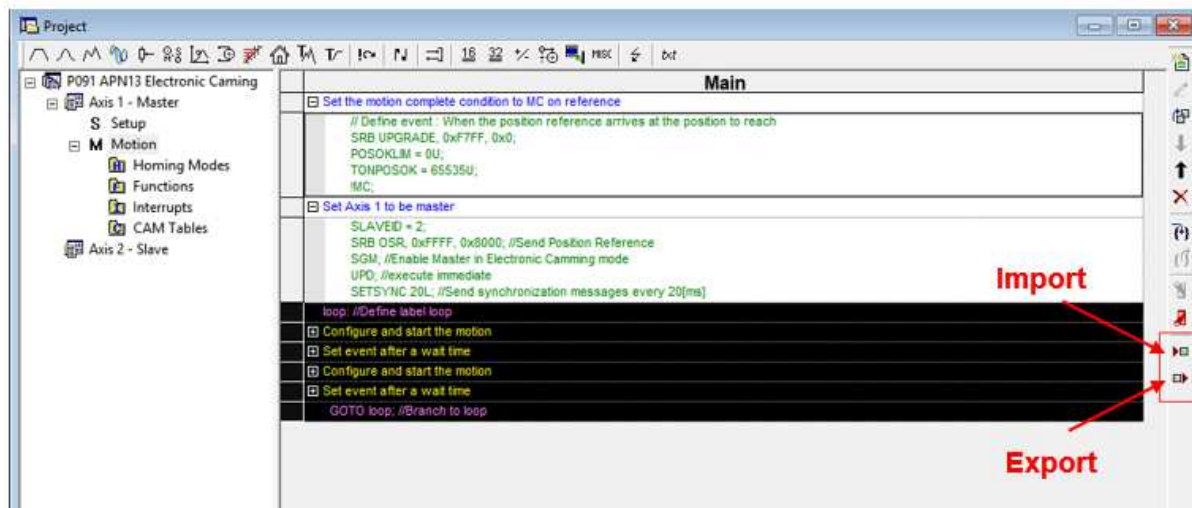


Figure 3. Import / Export code sequences

The “Import” option, will be used to add the respective code sequence (the “*.msq” file) to the desired project.